

# Permanent Supportive Housing

*Proven Solution, Community Benefits*



## What is Permanent Supportive Housing?



Permanent Supportive Housing is **deeply affordable housing with wraparound supportive services on-site**. It's a proven solution that helps people in need or experiencing homelessness to stabilize, get healthy, and improve their lives.

When we meet our neighbors' needs with homes, care, dignity, and respect, **everyone is safer and better off**.



Supportive housing ensures people don't just have a home, they also have the support they need to stay healthy and housed long-term.

**96%**

of people who moved into Bay Area Supportive Housing **remain stably housed** for at least 12 months.<sup>1</sup>

**86%**

of residents **do not experience homelessness** again.<sup>1</sup>

**Supportive housing offers vital services to residents.**



Mental & Behavioral Health



Job Placement & Retention



Educational Programs



Nursing Services



Aging in Place



Peer Support



## What are the benefits of Permanent Supportive Housing?

Supportive housing doesn't only benefit the people who live there. It helps solve homelessness, creates jobs and economic opportunities, and makes our communities stronger and safer.

### COMMUNITY BENEFITS

**Supportive housing improves neighborhoods.**



Safety



Neighborhood Amenities



Stabilizes Property Values over Time.<sup>2</sup>

**People in supportive housing live more stable and productive lives.**



Increased Employment



Better Health Outcomes



Higher School Attendance



### JOB OPPORTUNITIES

Supportive Housing buildings provide more job opportunities than other housing developments, including for residents and other people overcoming barriers to employment.



Front Desk Clerk



Security



Janitorial or Maintenance Support



Case Manager



## HEALTHCARE SAVINGS

**Supportive housing yields significant public savings in healthcare-related costs.**

Among high-needs homeless populations, those offered supportive housing spent fewer days in hospitals and nursing homes and had fewer emergency room visits per year during the study period, totaling more than \$6,000 per person per year in health care savings, among other positive results.<sup>3</sup>

**Annual health care savings of more than \$6,000 per person**



**Days in Hospital**



**Emergency Room Visits**



**Days in Nursing Home**



## QUALITY SERVICES & STAFFING

Those healthcare savings alone cover the operating costs of the higher staff-to-resident ratios at these properties.

Services at Permanent Supportive Housing are delivered by highly trained staff, which requires greater investment in operations than at other kinds of affordable housing communities.

**\$17,063** per unit per year to operate **quality Permanent Supportive Housing**

Minus **\$6,000/** person per year in healthcare savings

**Lower Total Costs**



**\$11,063**

Compared to **\$13,748** per unit per year for properties **without support services**

No healthcare savings

**Higher Total Costs**



**\$13,748**



## Let's make it easier to build and operate Permanent Supportive Housing.

**As citizens, we must demand bold action to meet the challenge of homelessness at the scale of need.** Decision-makers need to answer the call and prioritize proven solutions like Permanent Supportive Housing.

### Here are some strategies that bring down costs and improve outcomes:

**Larger buildings with more units** have cost efficiencies, as more residents can share resources and amenities.



**Focusing on serving one group of people with special needs**, such as veterans or people impacted by domestic violence, helps providers move people into housing more efficiently and deliver targeted services that improve resident outcomes.



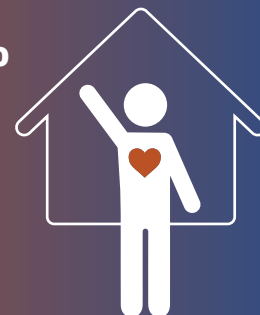
### Investment improves outcomes.

Residents at well-resourced properties have the support they need from staff to stay in their homes and are less likely to fall behind on rent or have to move out for other reasons.

More than **40% reduction** in late or unpaid rent in well-resourced properties (compared to lower resource properties).



More than **20% improvement** in keeping residents stably housed.



**Adequate funding and staffing also increase resident participation** in the free, voluntary services that help them thrive.



At well resourced properties, **80% of residents participate in supportive services.**



At lower resourced properties **less than 50% of residents participate in supportive services.**

**Successful Permanent Supportive Housing requires reliable, sustainable funding** to cover operating expenses over the long term. Boosting resources for supportive services from a range of sources can help improve resident outcomes and transform our communities for the better.

How can California's lawmakers make Supportive Housing even more effective?



Expand vouchers



Raise state services caps



Open up health care funding



Improve system coordination

California has the resources to strengthen Permanent Supportive Housing, whenever we choose to prioritize safe, stable homes for our neighbors who need them the most.

**Call on your local and statewide leaders and urge them to be champions for real solutions to homelessness.**

**Primary Source:** [Reid, Carolina. \*Permanent Supportive Housing as a Solution to Homelessness: The Critical Role of Long-Term Operation Subsidies\*. UC Berkeley Turner Center for Housing Innovation. June 2023.](#)

**Additional Sources:**

1. [Kurtzman, Laura. \*Study Finds Permanent Supportive Housing is Effective for Highest Risk Chronically Homeless People\*. University of California San Francisco. September 2020.](#)
2. [The Corporation for Supportive Housing \(CSH\). \*Supportive Housing 101: What is Supportive Housing?\*](#)
3. [Dohler Ehren, et al. \*Supportive Housing Helps Vulnerable People Live and Thrive in the Community\*. Center on Budget and Policy Priorities \(CBPP\). May 2016.](#)