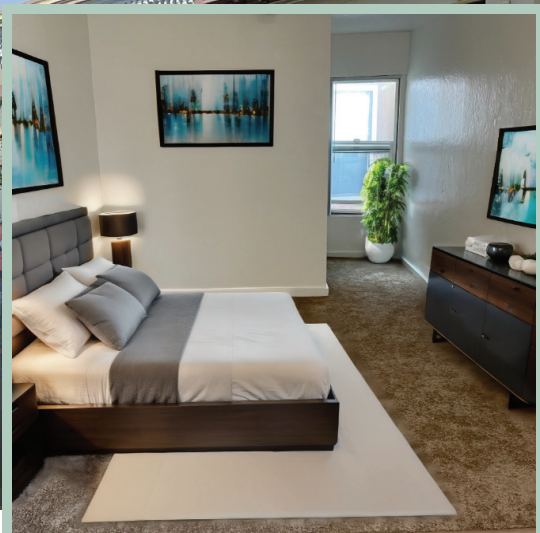


Sundial Apartments

Now Accepting Applications for Studio Apartments



Sundial studios feature kitchenettes and private bathrooms. Located within a vibrant retail neighborhood, this community is close to Sign Hill and Orange Memorial parks for outdoor recreation.

Sundial Apartments is now accepting completed applications for its studio apartments. A lottery will be run periodically during the application period and applicants will be placed on the waitlist in order of lottery number within consecutive lottery runs. No fax or email applications will be accepted.

HOW TO APPLY

Online: Scan the QR code or visit
<https://www.midpen-housing.org/property/sundial>

In Person or US Mail: Sundial rental office is located at Peninsula Station, 2901 South El Camino Real, San Mateo, CA 94403. Office hours: M-F, 9am-5pm

By Phone: (650) 212-0935



OCCUPANCY AND INCOME QUALIFICATIONS*

Apartment Type	Occupancy	Maximum Annual Income	Monthly Rent
Studio	1 Person	\$109,700	\$975
Studio	2 People	\$125,350	\$975

*Income will be verified prior to lease signing. For more information call the leasing office at 650.212.0935.

For a full list of qualifications, including income limits, occupancy limits and other criteria, please refer to the application packet and Resident Selection Criteria which are available online or at the above listed leasing office.

For more information, please email: sundial@midpen-housing.org



📍 Sundial Apartments | 215 4th Lane | South San Francisco, CA 94080

📞 (650) 212-0935

BRE Corporate License #00822390

