

# MARYCE FREELAN PLACE is now accepting applications for affordable 3-bedroom apartments

MARYCE FREELAN PLACE is an affordable housing community located in Mountain View close to shopping, schools, parks and public transit.

This garden community features mature landscaping, BBQ area, playground, and courtyard in a quiet residential neighborhood. Additional amenities include:

## COMMUNITY AMENITIES



Computer Lab



Playground



Laundry Facilities



Free parking

## APARTMENT AMENITIES

- Updated kitchens
- Electric appliances
- Ample storage
- Dining area

## APPLICATION INFORMATION

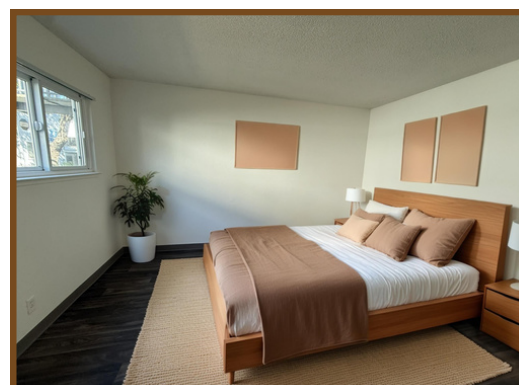
Applications will be accepted from December 1, 2025, to December 19, 2025.

Apply online (preferred), in person, or by mail at the address below. Applications submitted by mail must be postmarked no later than December 19, 2025.

Maryce Freelen Place  
2230 Latham Street  
Mountain View, CA 94040  
Phone: (650) 965-9749

Email: [marycefreelen@midpen-housing.org](mailto:marycefreelen@midpen-housing.org)

For a full list of qualifications, please refer to the application packet and Resident Selection Criteria which are available online or at the above listed leasing office.



Please visit our website to apply



[Maryce Freelen Place](#)

