

Shorebreeze II is accepting applications for affordable studio and 1-bedroom apartments

Shorebreeze II is an affordable housing community located in Mountain View close to shopping, parks and public transit.

This garden community features mature landscaping, playgrounds and picnic areas. Additional amenities include:

COMMUNITY AMENITIES



Community Room



Computer Lab



Playground



Laundry Facilities



Community Garden



Free parking

APARTMENT AMENITIES

- Updated kitchens
- Ample storage
- Electric appliances

APPLICATION INFORMATION

Applications will be accepted from December 19, 2025 to January 16, 2026.

Apply online (preferred), in person, or by mail at the address below.

Applications submitted by mail must be postmarked no later than January 16, 2026.

Shorebreeze II

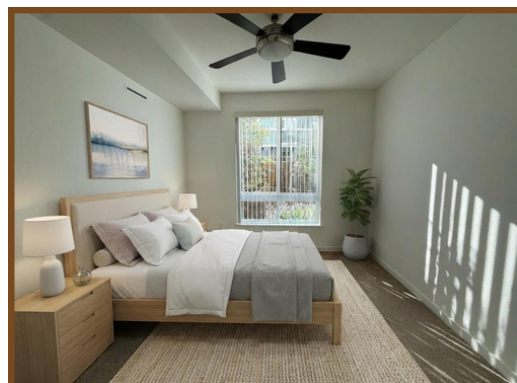
460 N. Shoreline Boulevard

Mountain View, CA 94043

Phone: (650) 966-1327

Email: shorebreeze@midpen-housing.org

For a full list of qualifications, please refer to the application packet and Resident Selection Criteria which are available online or at the above listed leasing office.



Please visit our website to apply



[Shorebreeze II](#)



MidPen
HOUSING

