

# ITALIAN GARDENS is now accepting applications for affordable 2-bedroom apartments

Italian Gardens is an affordable housing community located in San Jose close to shopping, restaurants, parks, and public transportation.

This garden-style community features mature landscaping, and playgrounds. Additional amenities include:

## COMMUNITY AMENITIES



Community Room



Swimming Pool



Playground



Laundry Facilities



Free Parking

## APARTMENT AMENITIES

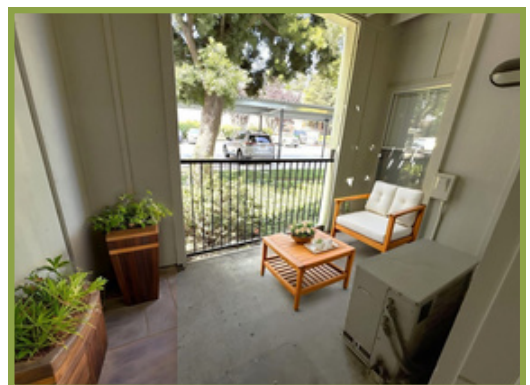
- Ample closet space
- Dining area
- Private patio or balcony

## APPLICATION INFORMATION

Applications will be accepted from February 2, 2026, to March 2, 2026.

Apply online (preferred), in person, or by mail at the address below.  
Applications submitted by mail must be postmarked no later than March 2, 2026.

Italian Gardens  
1516 Almaden Road  
San Jose, CA 95125  
Phone: (408) 293-9118  
Email: [italiangardens@midpen-housing.org](mailto:italiangardens@midpen-housing.org)  
For a full list of qualifications, please refer to the application packet and Resident Selection Criteria which are available online or at the above listed leasing office.



Please visit our website to apply



Italian Gardens

# Italian Gardens Income, Occupancy and Rent

## Minimum Monthly Income and Rent

Income Limit (AMI*)	Minimum Monthly Income	Rent – 2 Bedroom
30%	\$2,712 - \$2,860	\$1,356 - \$1,430
35%	\$3,336	\$1,668
40%	\$3,814	\$1,907
45%	\$4,290	\$2,145
50%	\$2,712 - \$4,766	\$1,356 - \$2,383
60%	\$5,720	\$2,860
80%	\$7,180	\$3,590

## Unit Size and Occupancy

Unit Size	Occupancy
2 Bedroom	2 – 5 People

\*All Rents are subject to change as set by the governing agency. Not all AMI Rent limits shown above are available for all units.

Applicant households must meet the minimum income requirements set at two (2) times the rent for the unit (mitigating circumstances may apply).

Minimum income requirements are not applicable to applicants with a Section 8 Voucher from the Housing Authority.

Please inquire with Management for any Maximum and Minimum Rent Clarifications

## Maximum Monthly Income

New Limits published by HUD 04/01/2025; Income Limits at time of Move-In are used for final qualification

Income Limit (AMI*)	2 People	3 People	4 People	5 People
30%	\$4,016 - \$4,237	\$4,520 - \$4,767	\$5,020 - \$5,295	\$5,425
35%	\$4,943	\$5,562	\$6,177	\$6,673
40%	\$5,650	\$6,356	\$7,060	\$7,626
45%	\$6,356	\$7,151	\$7,942	\$8,580
50%	\$6,700 - \$7,062	\$7,537 - \$7,945	\$8,370 - \$8,825	\$9,041 - \$9,533
60%	\$8,475	\$9,535	\$10,590	\$11,440
80%	\$10,637	\$11,966	\$13,295	\$14,362