

# PAULSON PARK I

## Apply to the wait list for affordable 1-bedroom apartments for Seniors (62+)



Paulson Park I is an affordable housing community located in Mountain View close to shopping, retail restaurants and Rengstorff Park.

This garden community features mature landscaping in a quiet neighborhood. Community spaces include game rooms, a library, and patio and BBQ area. Additional amenities include:

### COMMUNITY AMENITIES

-  Community Room
-  Computer Lab
-  Fitness Room
-  Laundry Facilities
-  Community Garden
-  Free parking

### APARTMENT AMENITIES

- Updated kitchens
- Electric appliances
- Ample storage

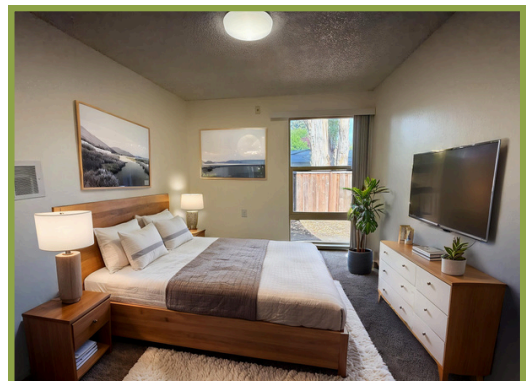
### APPLICATION INFORMATION

Applications will be accepted from 9:00am, May 22, 2026, to 5:00pm, June 19, 2026.

Apply online (preferred), in person, or by mail. Applications submitted by mail must be postmarked no later than June 19, 2026.

Paulson Park I  
111 Montebello Avenue  
Mountain View, CA, 94043  
Phone: (650) 964-5600 or (650) 357-9773 TTD  
Email: [paulsonpark@midpen-housing.org](mailto:paulsonpark@midpen-housing.org)

For a full list of qualifications, including income limits and other criteria, please refer to the application packet and Resident Selection Criteria which are available online or at the above listed leasing office



Please visit our website to apply



[Paulson Park I](#)

# PAULSON PARK I: Income, Occupancy, and Rent



MAXIMUM GROSS ANNUAL INCOME			
Income Limit (AMI*)	1 Person	2 People	3 People
50%	\$70,350	\$80,400	\$90,450
60%	\$88,980	\$101,700	\$114,420



OCCUPANCY AND RENT	
AMI	1 Bedroom (1 - 3 People)
50%	\$1,884 - \$2,010
60%	\$2,383



\*All Rents are subject to change as set by the governing agency. Not all AMI Rent limits shown above are available for all units.

Minimum required income is 2X monthly rent. No minimum income required for Section 8 Voucher holders.

For more information, please visit [www.midpen-housing.org/property/paulson-park-i/](http://www.midpen-housing.org/property/paulson-park-i/)

MidPen Property Management Corporation, BRE# 00822390.

Please visit our website to apply



[Paulson Park I](http://www.midpen-housing.org/property/paulson-park-i/)