

# MIDWAY VILLAGE I

## Apply to the wait list for affordable 1-, 2-, 3-, and 4-bedroom apartments

Midway Village is an affordable housing community located in Daly City close to shopping, parks and public transportation.

This welcoming community features apartments thoughtfully designed for convenience and comfort. Additional amenities include:

### COMMUNITY AMENITIES



Community Room



BBQ Area



Secure Bike Storage



Central Courtyard



Learning Center



Free Parking

### APARTMENT AMENITIES

- Modern kitchens
- In-unit laundry
- Electric appliances
- Dining area

### APPLICATION INFORMATION

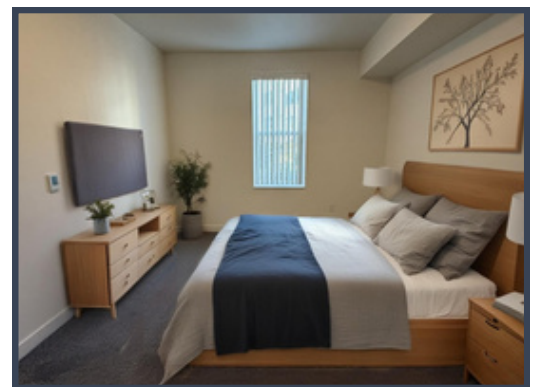
Applications will be accepted from 9:00am on June 16, 2026 to 5:00pm on July 14, 2026.

Apply online (preferred), in person, or by mail at the address below. Applications submitted by mail must be postmarked no later than June 30 2026.

Midway Village  
80 & 88 Park Street  
Daly City, CA 94014  
Phone: (415) 769-4127

Email: [midwayvillage@midpen-housing.org](mailto:midwayvillage@midpen-housing.org)

For a full list of qualifications, please refer to the application packet and Resident Selection Criteria which are available online or at the above listed leasing office.



Please visit our website to apply



[Midway Village](#)

# MIDWAY VILLAGE I: Income, Occupancy, and Rent



## MAXIMUM GROSS ANNUAL INCOME

Income Limit (AMI*)	1 Person	2 People	3 People	4 People	5 People	6 People	7 People	8 People	9 People
30%	\$41,150-\$44,150	\$47,000-\$50,450	\$52,900-\$56,750	\$58,750-\$63,050	\$63,450-\$68,100	\$68,150-\$73,150	\$72,850-\$78,200	\$77,550-\$83,250	\$82,250-\$88,300
50%	\$68,550-\$73,550	\$78,350-\$84,050	\$88,150-\$94,550	\$97,900-\$105,050	\$105,750-\$113,500	\$113,600-\$121,900	\$121,400-\$130,300	\$129,250-\$138,700	\$137,100-\$147,070
60%	\$82,236-\$88,260	\$93,984-\$100,860	\$105,732-\$113,460	\$117,480-\$126,060	\$126,878-\$136,200	\$136,277-\$146,280	\$145,675-\$156,360	\$155,074-\$166,440	\$164,472-\$176,500
80%	\$109,700-\$117,700	\$125,350-\$134,500	\$141,000-\$151,300	\$156,650-\$168,100	\$169,200-\$181,600	\$181,750-\$195,040	\$194,250-\$208,480	\$206,80-\$221,920	\$219,350-\$235,350

## OCCUPANCY AND RENT

AMI	1 Bedroom (1 - 3 People)	2 Bedroom (2 - 5 People)	3 Bedroom (4 - 7 People)	4 Bedroom (6-9 People)
30%	\$1,101-\$1,182	\$1,322-\$1,418	\$1,527-\$1,639	\$1,703-\$1,828
50%	\$1,836-\$1,970	\$2,203-\$2,363	\$2,545-\$2,731	\$2,840-\$3,047
60%	\$2,202-\$2,364	\$2,643-\$2,836	\$3,054-\$3,278	\$3,406-\$3,657
80%	\$2,938-\$3,152	\$3,525-\$3,782	\$4,073-\$4,371	\$4,543-\$4,876

\*All Rents are subject to change as set by the governing agency. Not all AMI Rent limits shown above are available for all units.

Minimum required income is 2X monthly rent. No minimum income required for Section 8 Voucher holders.

For more information, please visit <https://www.midpen-housing.org/property/midway-village-i/>

MidPen Property Management Corporation, BRE# 00822390.

Please visit our website to apply



[Midway Village](https://www.midpen-housing.org/property/midway-village-i/)